

# Product data sheet

Specifications



Safety switch, general duty,  
fusible, 2 pole, 3 wire, 240VAC,  
30A, Type 1, with neutral

D221N

Product availability: Stock - Normally stocked in distribution facility

## Main

|                           |  |
|---------------------------|--|
| Product                   | Single Throw Safety Switch   |
| Duty Rating               | General duty   |
| Device Application        | Residential  |
| Disconnect Type           | Fusible disconnect switch  |
| Factory Installed Neutral | Neutral (factory installed)  |
| Number of Poles           | 2  |
| Current Rating            | 30 A   |
| Voltage Rating            | 240 V AC   |
| Enclosure Rating NEMA     | NEMA 1   |
| Motor power hp            | 1.5 hp at 240 V AC 60 Hz for 1 phase motors<br>3 hp at 240 V AC 60 Hz for 3 phase motors<br>3 hp at 240 V AC 60 Hz for 1 phase motors<br>7.5 hp at 240 V AC 60 Hz for 3 phase motors |

## Complementary

|                              |   |
|------------------------------|---|
| Short Circuit Current Rating | 100 kA maximum depending on fuse H, K or R                              |
| Fuse type                    | H, K or R   |
| Mounting Type                | Surface   |
| Electrical Connection        | Lugs  |
| Wiring configuration         | 3-wire  |
| Wire Size                    | AWG 14...AWG 6 copper<br>AWG 12...AWG 6 aluminium                       |
| Tightening torque            | 30 lbf.in (3.4 N.m) 0.003...0.02 in² (2.08...13.3 mm²) (AWG 14...AWG 6) |
| Depth                        | 3.63 in (92.20 mm)  |
| Width                        | 7.25 in (184.15 mm)   |
| Height                       | 9.25 in (234.95 mm)   |
| Net Weight                   | 17.0 lb(US) (7.7 kg)  |

## Environment

|                |                      |
|----------------|----------------------|
| Certifications | UL listed file E2875 |
|----------------|----------------------|

## Ordering and shipping details

|                   |              |
|-------------------|--------------|
| Category          | US1DE1A00006 |
| Discount Schedule | DE1A         |

Price is "List Price" and may be subject to a trade discount – check with your local distributor or retailer for actual price.

Disclaimer: This documentation is not intended as a substitute for and is not to be used for determining suitability or reliability of these products for specific user applications

|                   |              |
|-------------------|--------------|
| GTIN              | 785901460534 |
| Returnability     | Yes          |
| Country of origin | MX           |

## Packing Units

|                              |                              |
|------------------------------|------------------------------|
| Unit Type of Package 1       | PCE                          |
| Number of Units in Package 1 | 1                            |
| Package 1 Height             | 5.20 in (13.208 cm)          |
| Package 1 Width              | 6.80 in (17.272 cm)          |
| Package 1 Length             | 9.20 in (23.368 cm)          |
| Package 1 Weight             | 4.191 lb(US) (1.901 kg)      |
| Unit Type of Package 2       | CAR                          |
| Number of Units in Package 2 | 5                            |
| Package 2 Height             | 10.00 in (25.400 cm)         |
| Package 2 Width              | 8.30 in (21.082 cm)          |
| Package 2 Length             | 19.20 in (48.768 cm)         |
| Package 2 Weight             | 21.499 lb(US) (9.752 kg)     |
| Unit Type of Package 3       | PAL                          |
| Number of Units in Package 3 | 150                          |
| Package 3 Height             | 35.00 in (88.900 cm)         |
| Package 3 Width              | 40.00 in (101.600 cm)        |
| Package 3 Length             | 48.00 in (121.920 cm)        |
| Package 3 Weight             | 660.0006 lb(US) (299.371 kg) |

## Contractual warranty

|          |           |
|----------|-----------|
| Warranty | 18 months |
|----------|-----------|

Schneider Electric aims to achieve Net Zero status by 2050 through supply chain partnerships, lower impact materials, and circularity via our ongoing “Use Better, Use Longer, Use Again” campaign to extend product lifetimes and recyclability.

[Environmental Data explained >](#)

[How we assess product sustainability >](#)

| Environmental footprint  |   |
|--------------------------|---|
| Environmental Disclosure | <a href="#">Product Environmental Profile</a> |

Use Better

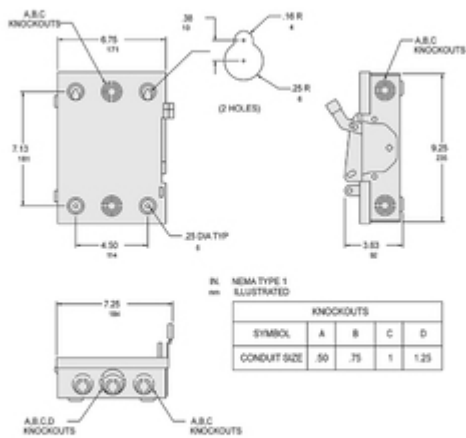
| Materials and Substances               |   |
|--|---|
| Packaging made with recycled cardboard | Yes   |
| Packaging without single use plastic   | Yes   |
| <a href="#">EU RoHS Directive</a>      | Compliant with Exemptions   |
| REACH Regulation                       | <a href="#">REACH Declaration</a>   |
| California proposition 65              | WARNING: This product can expose you to chemicals including: Lead and lead compounds, which is known to the State of California to cause cancer and birth defects or other reproductive harm. For more information go to <a href="http://www.P65Warnings.ca.gov">www.P65Warnings.ca.gov</a> |
| PVC free                               | Yes   |

Use Again

| Repack and remanufacture |  |
|--------------------------|--|
| Circularity Profile      | No need of specific recycling operations |
| Take-back                | No                                       |

Technical Illustration

Dimensions



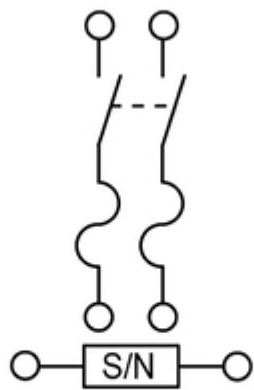
ALL DIMENSIONS ARE APPROXIMATE. REFER TO TECHNICAL DRAWINGS AND DOCUMENTS

Technical Illustration

Wiring diagram

---

FUSIBLE



D211N

D221N